



West Kootenay Kennel Club

Seven All-Breed Championship Shows

August 15th - 18th, 2025

Junior Handling - Friday, Saturday and Sunday
Sweepstakes - Saturday noon

Brilliant Cultural Centre
1876 Brilliant Road, Castlegar

****Grounds open Thursday at 1:00 pm****



Free Bowl of Chilli (while quantities last) Thursday 5pm to 7pm
Pancake Breakfast Friday, Saturday and Sunday 7:30am - 10:00am \$5
BBQ & Parade of Veterans, Champions & Titleholders - Saturday 6:00pm \$10
Perogy Pawty - Sunday 6:00 pm \$15

JUDGES:

CONFORMATION JUDGES:

Ms. Wendy Hamilton-Petkau.....Foothill, Alberta
Ms. Margaret Jones.....Ladysmith, BC
Mr. Richard Lopaschuk.....Cranbrook, BC
Mr. Patrick Mudge.....Cross Creek, New Brunswick
Ms. Lynda Saranchuk.....High River, Alberta
Mr. Mel Saranchuk.....High River, Alberta
Mr. Gary Stiles.....Camano Island, Washington
Ms. Patricia Taylor.....Winnipeg, Manitoba
Dr. Terill Udenberg.....Vernon, BC
Mr. Raymond Yurick.....Surrey, BC

SWEEPSTAKE JUDGE: Ms. Colette Ritchie

JR. HANDLING JUDGES: tba

Schedules are based on 2.4 minutes per dog. Please allow for absentees and variances in the rate of judging. Tentative group orders are subject to change. Move-ups must be made a minimum of one hour prior to the breed judging.



P.O. Box 100
Fort Langley, B.C. V1M 2R4
(604) 845-9510
website: classicshowservices.ca

Welcome to the WKKC 50th Anniversary Show

PLEASE READ THIS DOCUMENT IN FULL

The 2025 Show Committee sincerely thanks you all for entering our special anniversary show. Our entries are excellent, and we are very grateful and looking forward to spending a special weekend with you all.

FREE CHILLI AND A BUN WHILE SUPPLIES LAST THURSDAY 5:00PM AT HOSPITALITY TENT.

FRIDAY NIGHT - SEMINAR \$40, TICKETS AVAILABLE - redgold@shaw.ca

RV PARKING: A club member will be at the entry gate to guide you and a member will be in a golf cart who will take you to your spot. Please be patient as this process does take a while. Most RV Parking is in the gravel parking lot, however with the number of RVs that are attending, we have had to open the lower ball field (unused for ball) which has plenty of space. Please stop outside the gate and check in with our club member. If you are in the ball field, you will pass the gate and turn right down the road, just follow the road, turning right at the end, you will cross behind the building go down a slight slope and pick your spot. We only ask that you park in a straight line once the first person is in there. If you are in the gravel parking lot, you will be taken to your spot. If your tow vehicle does not fit within the 45' length you have been given, it MUST be parked in a day parking area.

DAY PARKING: Day parking is along the fence with the chain parallel to the road. You MUST pull in nose first, no backing in. Once that area is full, the day parking is also down in the ball field, so you would follow those instructions above on how to park there, please park in rows.

DAYTENTS WITH PARKING AND GENERATORS: These spaces are at the far-right end of the field (when facing the building) and first come first served.

DAYTENTS UNDER TREES: These spots will be marked out and are first come, first served. NO GENERATORS ARE ALLOWED IN THIS AREA. Unloading and set up can be done from the side road, or from day parking. NO UNLOADING IS ALLOWED FROM THE FIRELANE WHICH RUNS PARALLEL TO THE GRASS FIELD WHERE RINGS WILL BE SET UP. Parking is allowed on the side road, but please be very considerate of the local residents. We sure don't want to loose our grounds.

NO ENTRANCE BEFORE 1:00 ON THURSDAY.

NO PARKING ALLOWED ALONG THE CITY ROAD THAT RUNS PARALLEL WITH THE FRONT FENCING.

- Please follow the instructions of the club members upon entering the grounds
- One vehicle per site (trailer and automobile are one vehicle) and must fit into your spot
- Generators MUST be exhausted away from neighbours and on a spill-proof tray. If not on a spill-proof tray, generators are not permitted and you will be required to put them away.
- Generators must be turned off between 9:00pm and 6:30am daily
- Please vacate the grounds by 2 hours after BIS on Monday, August 18th.
- Ensure your site is returned to its original condition on departure.

SANI-DUMP is located at the Co-op Gas Station in town or at the Castlegar RV Park on Highway 3 West. The Chamber of Commerce dump has been closed.

WASHROOMS There are people-potties behind the building, take path on right of building towards the old ball diamond behind the playground.

DOG WASH located on the right side of the building when facing it. PLEASE do not REMOVE THE HOSE OR THE NOZZLE provided by the club, these cost the club money.

CONCESSION We will have a concession up on the right side of the building. Please take advantage of this as it helps support our club and the food will be reasonably priced and delicious.

FRIDAY - SUNDAY @ the Hospitality Tent

- Daily raffles (visit the Hospitality Tent to get your tickets), draws will be made each day after Best Puppy in Show.
- BBQ TICKETS or PEROGY PAWTY TICKETS can be picked up the ladies in hospitality. A limited number of paper plates are available at each event.
- PARADE SATURDAY NIGHT FOLLOWING BBQ, EVEN IF YOU ARE NOT ENTERED, PLEASE BRING A CHAIR AND SIT RING SIDE TO CLAP AND CHEER ON ALL THESE WONDERFUL DOGS.

Again, we know you have heard it before but... PICK UP AFTER YOUR DOGS and please don't let them urinate on our equipment. Our members thank you. There are streets around the grounds that you can walk with your dogs. It has been a real problem in the past and with the number of clubs losing their venues, we ask that people be more considerate and pick up after your dogs. If you see someone not picking up after their dog, please do not ignore this and deal with it kindly and respectfully. If you have any issues, contact a Club Member.

POTTING YOUR DOGS ON EITHER OF THE GRASS FIELDS ON EACH SIDE OF THE BUILDING IS PERMITTED. PLEASE EXERCISE THEM RESPONSIBLY.

In the Kootenays we take pride in maintaining our clean air, surrounding landscapes and water. In trying to minimize toxins we expect dog grooming to be done at your set-up. NO GROOMING PRODUCTS SUCH AS HAIR SPRAYS, CHALK ETC. CAN BE USED UNDER EXHIBITOR RING SIDE SHADE TENTS.

******Please, if your dog returns to your set-up, so does your equipment******

To keep approaches clear and safe while moving in and out of the show rings, all trolleys, tables and crates will only be allowed at the exhibitor's shade tent while you are exhibiting your dog's NOT WHILE YOU ARE WAITING FOR YOUR BREED TO ENTER THE RING.

BEAR/COYOTE AWARE – Please be advised that there are bears and coyotes active in the area surrounding our show grounds. NO garbage is be left outside overnight. We will be emptying all the garbage cans around 6:00pm and thereafter we ask that you dispose of your garbage in the bear proof dumpers. PLEASE DO NOT UNDER ANY CIRCUMSTANCES STACK YOUR GARBAGE ALONG SIDE OF THE OF THE BINS IF THEY ARE FULL. CONTACT A CLUB MEMBER IF THEY NEED EMPTYING OR TAKE CARE OF THAT YOURSELF FOR US, WE WOULD BE VERY GRATEFUL.



Typical summer days in the Kootenays can reach 35+ degrees Celsius. Please ensure you and your dogs are adequately hydrated and shaded.

Fire Hazard is EXTREME. Please use caution. We have a fire/evacuation plan at the hospitality tent. Fire extinguishers are also available at the hospitality table in an emergency.

SMOKING AND VAPING IS ONLY PERMITTED AT YOUR SETUP



FIRE PLAN

If you discover a fire, please immediately contact a club member and take appropriate safety steps.

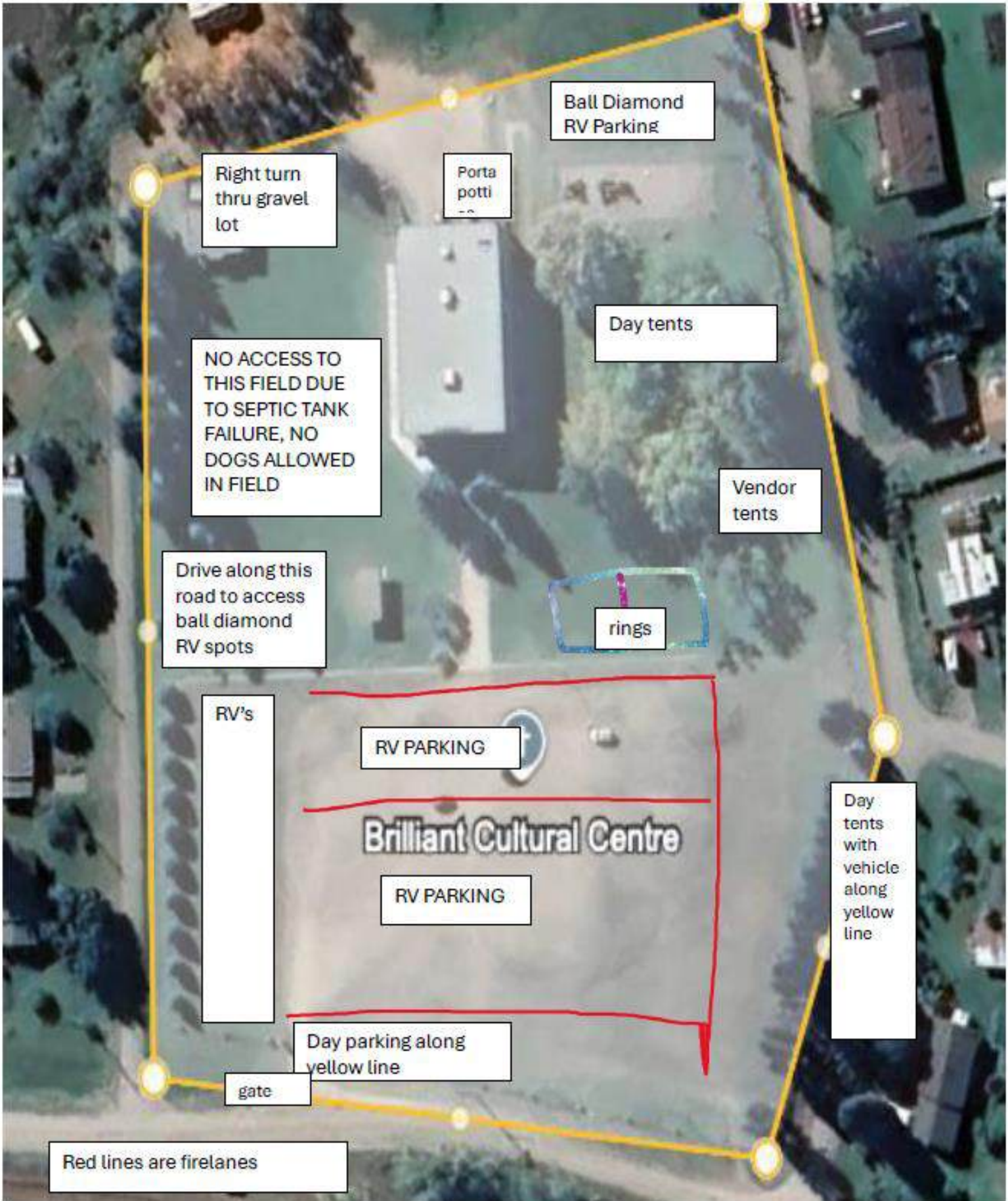
If you are asked to evacuate the grounds, the fire plan is as follows.

All exhibitors are to load themselves and their animals into all available vehicles (NOT RV'S) that are able to leave the show grounds. All show equipment, day tenting equipment, rvs and their set up equipment is to remain behind.

IF AND ONLY IF the Fire Department gives permission, can RV Owners remove their RV's from the RV parking area.

Thank you in advance for adhering to the fire plan.

NOW..... LET'S HAVE SOME FUN



Ball Diamond
RV Parking

Right turn
thru gravel
lot

Porta
potti

Day tents

NO ACCESS TO
THIS FIELD DUE
TO SEPTIC TANK
FAILURE, NO
DOGS ALLOWED
IN FIELD

Vendor
tents

Drive along this
road to access
ball diamond
RV spots

rings

RV's

RV PARKING

Brilliant Cultural Centre

RV PARKING

Day
tents
with
vehicle
along
yellow
line

Day parking along
yellow line

gate

Red lines are firelanes

WKKC - August 15th, 2025 (Friday)

AM - Show #1

Key: 0-0-0-0

V

Exh

Male-Female-Specials Male-Specials Female Veteran Exhibition Only

***Supported Entry/Booster

RING 1

8:00 am

Judge: Mel Saranchuk (37)

- 1 - Pointer 0-0-1-0
23 - Retriever - Golden *** 2-9-7-3 V2
Exh1
3 - Retriever - Labrador 0-1-1-1
7 - Retriever - NSDT 1-3-2-1
3 - Weimaraner 1-2-0-0

SPORTING GROUP LEVEL

9:35 am

Judge: Mel Saranchuk (13)

- 1 - PBGV 0-0-1-0
2 - Afghan Hound 1-1-0-0
1 - Borzoi 1-0-0-0
1 - Norrbottenspets 1-0-0-0
3 - Otterhound 0-1-1-1
1 - Pharaoh Hound 0-0-1-0
2 - Rhodesian Ridgeback 1-0-0-1
2 - Whippet 0-0-1-0 V1

HOUD GROUP LEVEL

10:15 am

Judge: Mel Saranchuk (32)

- 1 - Akita 0-0-1-0
11 - Bernese Mountain Dog 3-5-0-3
2 - Boxer 0-0-0-2
4 - Doberman Pinscher 0-0-2-1
1 - Great Dane 0-0-0-1
4 - Mastiff 0-2-1-1
3 - Newfoundland 0-1-0-1 V1
2 - Rottweiler 1-0-1-0
1 - Samoyed 0-1-0-0
1 - Schnauzer - Giant 0-0-0-1
2 - Siberian Husky 0-0-1-0 V1

WORKING GROUP LEVEL

Judge: Mel Saranchuk (13)

- 1 - Am Staffordshire Terrier 0-0-0-1
1 - Bull Terrier - Miniature 0-0-1-0
1 - Irish Terrier 0-0-1-0
2 - Bull Terrier 1-0-1-0
2 - Cairn Terrier 1-0-0-1
1 - Rat Terrier 1-0-0-0
1 - Scottish Terrier 0-0-1-0
1 - Welsh Terrier 0-1-0-0
3 - West Highland White Terrier 0-0-1-2

TERRIER GROUP LEVEL

RING 2

8:00 am

Judge: Lynda Saranchuk (24)

- 1 - Australian Shepherd 1-0-0-0
1 - Bearded Collie 0-0-0-1
1 - Belgian Shepherd 0-0-1-0
1 - Border Collie 0-0-1-0
2 - Bouvier des Flandres 1-0-0-1
7 - Collie - Rough 0-1-3-2 V1
Exh1

- 2 - Collie - Smooth 0-0-0-2

- 1 - Iceland Sheepdog 1-0-0-0
7 - Shetland Sheepdog 0-2-3-1 V1
1 - Finnish Lapphund 1-0-0-0

HERDING GROUP LEVEL

9:15 am

Judge: Lynda Saranchuk (42)

- 1 - Biewer Terrier 0-0-0-1
10 - Cav King Charles Spaniel 2-4-2-1 V1
8 - Chihuahua - Long Coat 3-2-0-3
7 - Chihuahua - Short Coat 0-1-1-5
1 - Chinese Crested 0-0-1-0
1 - Griffon - Brussels 0-1-0-0
2 - Papillon 0-0-0-1 V1
1 - Pekingese 0-0-1-0
4 - Pomeranian 1-1-1-1
1 - Pug 0-0-1-0
2 - Yorkshire Terrier 1-0-1-0
1 - Silky Terrier 0-0-0-1
3 - Havanese 0-2-1-0

TOY GROUP LEVEL

11:10 am

Judge: Lynda Saranchuk (14)

- 3 - Keeshond 2-0-1-0
2 - Bichon Frise 0-0-1-1
2 - French Bulldog 0-2-0-0
1 - Shiba Inu 0-0-1-0
2 - Shih Tzu 1-0-0-1
1 - Dalmatian 0-1-0-0
3 - Poodle - Standard 1-1-1-0

NON-SPORTING GROUP LEVEL

12:00 noon
Junior Handling
Judge: tba

Tentative Group Order:
(Immediately following breed judging in relevant group)
Herding
Sporting
Hound
Toy
Working
Non-Sporting
Terrier
BVIS/RBIS/BIS/BPIS - Mel Saranchuk (165) V10



WKKC - August 15th, 2025 (Friday)

PM - Show #2

Key: 0-0-0-0

BP

B

Male-Female-Specials Male-Specials Female Baby Puppy Brace ***Supported Entry/Booster

RING 1

1:00 pm

Judge: Lynda Saranchuk (35)

- 1 - Pointer 0-0-1-0
- 20 - Retriever - Golden *** 2-8-7-3
- 4 - Retriever - Labrador 0-1-1-1 BP1
- 7 - Retriever - NSDT 1-3-2-1
- 3 - Weimaraner 1-2-0-0

SPORTING GROUP LEVEL

2:30 pm

Judge: Lynda Saranchuk (14)

- 1 - Basset Hound 0-0-1-0
- 2 - Whippet 0-0-2-0
- 1 - PBGV 0-0-1-0
- 2 - Afghan Hound 1-1-0-0
- 1 - Borzoi 0-0-1-0
- 1 - Norrbottenspets 1-0-0-0
- 3 - Otterhound 0-1-1-1
- 1 - Pharoah Hound 0-0-1-0
- 2 - Rhodesian Ridgeback 1-0-0-1

HOUND GROUP LEVEL

3:10 pm

Judge: Lynda Saranchuk (35)

- 1 - Akita 0-0-1-0
- 13 - Bernese Mtn Dog *** 3-5-0-3 B1
- 2 - Boxer 0-0-0-2
- 3 - Doberman Pinscher 0-0-1-1 BP1
- 2 - Great Dane 0-0-0-1 BP1
- 6 - Mastiff 0-2-1-1 BP2
- 3 - Newfoundland *** 0-1-0-2
- 2 - Rottweiler 1-0-1-0
- 1 - Samoyed 0-1-0-0
- 1 - Schnauzer - Giant 0-0-0-1
- 1 - Siberian Husky 0-0-1-0

WORKING GROUP LEVEL

Judge: Lynda Saranchuk (11)

- 1 - Am Staffordshire Terrier 0-0-0-1
- 1 - Bull Terrier - Miniature 0-0-1-0
- 2 - Bull Terrier 1-0-1-0
- 2 - Cairn Terrier 1-0-0-1
- 1 - Scottish Terrier 0-0-0-1
- 1 - Welsh Terrier 0-1-0-0
- 3 - West Highland White Terrier 0-0-1-2

TERRIER GROUP LEVEL

RING 2

1:30 pm

Judge: Mel Saranchuk (19)

- 1 - Australian Shepherd 1-0-0-0
- 1 - Bearded Collie 0-0-0-1
- 1 - Border Collie 0-0-1-0
- 2 - Bouvier des Flandres 1-0-0-1
- 6 - Collie - Rough 0-1-3-2 Exh1
- 1 - Collie - Smooth 0-0-0-1
- 1 - Iceland Sheepdog 1-0-0-0
- 5 - Shetland Sheepdog 0-1-3-1
- 1 - Finnish Lapphund 1-0-0-0

HERDING GROUP LEVEL

2:25 pm

Judge: Mel Saranchuk (47)

- 1 - Biewer Terrier 0-0-0-1
- 9 - Cav King Charles Spaniel 1-4-1-1 B1 Exh1
- 7 - Chihuahua - Long Coat 3-2-0-2
- 10 - Chihuahua - Short Coat 0-1-1-5 BP1 B1
- 2 - Chinese Crested 0-0-1-0 BP1
- 1 - Griffon - Brussels 0-1-0-0
- 4 - Papillon 0-0-2-1 BP1
- 1 - Pekingese 0-0-1-0
- 4 - Pomeranian 1-1-1-1
- 1 - Pug 0-0-1-0
- 2 - Yorkshire Terrier 1-0-1-0
- 1 - Silky Terrier 0-0-0-1
- 4 - Havanese 0-2-1-0 BP1

TOY GROUP LEVEL

4:30 pm

Judge: Mel Saranchuk (14)

- 3 - Keeshond 2-0-1-0
- 2 - Bichon Frise 0-0-1-1
- 1 - Boston Terrier 0-0-0-0 BP1
- 2 - French Bulldog 0-2-0-0
- 1 - Shiba Inu 0-0-1-0
- 2 - Shih Tzu 1-0-0-1
- 3 - Poodle - Standard 1-1-1-0

NON-SPORTING GROUP LEVEL

Tentative Group Order:

(Immediately following breed judging in relevant group)

Herding

Sporting

Hound

Toy

Working

Non-Sporting

Terrier

BBPIS/BBIS/RBIS/BIS/BPIS - Lynda Saranchuk (159)

BP10 B3



Classic
SHOW SERVICES

sandik@classicshowservices.ca

WKKC - August 16th, 2025 (Saturday)

AM - Show #3

Key: 0-0-0-0

V

Exh

Male-Female-Specials Male-Specials Female Veteran Exhibition Only

RING 1

8:00 am

Judge: Dr. Terill Udenberg (42)

- 1 - Biewer Terrier 0-0-0-1
- 10 - Cav King Charles Spaniel 2-4-2-1 V1
- 7 - Chihuahua - Long Coat 3-1-0-3
- 7 - Chihuahua - Short Coat 0-1-1-5
- 1 - Chinese Crested 0-0-1-0
- 1 - Griffon - Brussels 0-1-0-0
- 5 - Papillon 1-0-2-1 V1
- 1 - Pekingese 0-0-1-0
- 4 - Pomeranian 1-1-1-1
- 1 - Silky Terrier 0-0-0-1
- 2 - Yorkshire Terrier 1-0-1-0
- 2 - Havanese 0-1-1-0

TOY GROUP LEVEL

9:55 am

Judge: Dr. Terill Udenberg (21)

- 1 - Australian Shepherd 1-0-0-0
- 2 - Bearded Collie 0-0-0-2
- 1 - Border Collie 0-0-1-0
- 2 - Bouvier des Flandres 1-0-0-1
- 7 - Collie - Rough 0-1-3-2 V1 Exh2
- 1 - Collie - Smooth 0-0-0-1
- 1 - Iceland Sheepdog 1-0-0-0
- 5 - Shetland Sheepdog 0-1-3-1
- 1 - Finnish Lapphund 1-0-0-0

HERDING GROUP LEVEL

11:00 am

Judge: Dr. Terill Udenberg (11)

- 4 - Keeshond 2-0-2-0
- 2 - Bichon Frise 0-0-1-1
- 2 - French Bulldog 0-2-0-0
- 1 - Shiba Inu 0-0-1-0
- 2 - Shih Tzu 1-0-0-1

NON-SPORTING GROUP LEVEL

11:45 am

Judge: Ms. Colette Ritchie (32)

Juvenile Sweepstakes

Males: 1(4-6), 1(6-9), 7(9-12), 3(12-18)
Females: 1(4-6), 6(6-9), 4(9-12), 4(12-18)

Veteran Sweepstakes

3(7-10M), 1(10+M), 1(7-10F)

RING 2

8:00 am

Judge: Ms. Margaret Jones (13)

- 1 - Am Staffordshire Terrier 0-0-0-1
- 2 - Bull Terrier - Miniature 0-0-1-1
- 1 - Irish Terrier 0-0-1-0
- 2 - Bull Terrier 1-0-1-0
- 2 - Cairn Terrier 1-0-0-1
- 1 - Scottish Terrier 0-0-1-0
- 1 - Welsh Terrier 0-1-0-0
- 3 - West Highland White Terrier 0-0-1-2

TERRIER GROUP LEVEL

8:40 am

Judge: Ms. Margaret Jones (33)

- 1 - Akita 0-0-1-0
- 11 - Bernese Mountain Dog 3-5-0-3
- 2 - Boxer 0-0-0-2
- 4 - Doberman Pinscher 0-0-2-1 V1 Exh1
- 1 - Great Dane 0-0-0-1
- 4 - Mastiff 0-2-1-1
- 4 - Newfoundland 0-1-0-2 V1
- 2 - Rottweiler 1-0-1-0
- 1 - Samoyed 0-1-0-0
- 1 - Schnauzer - Giant 0-0-0-1
- 2 - Siberian Husky 0-0-1-0 V1

WORKING GROUP LEVEL

10:15 am

Judge: Ms. Margaret Jones (15)

- 1 - Basset Hound 0-0-1-0
- 3 - Whippet 0-1-2-0 Exh1
- 1 - PBGV 0-0-1-0
- 2 - Afghan Hound 1-1-0-0
- 1 - Borzoi 1-0-0-0
- 1 - Norrbottenspets 1-0-0-0
- 3 - Otterhound 0-1-1-1
- 1 - Pharaoh Hound 0-0-1-0
- 2 - Rhodesian Ridgeback 1-0-0-1

HOUND GROUP LEVEL

11:00 am

Judge: Ms. Margaret Jones (40)

- 1 - Pointer 0-0-1-0
- 3 - Retriever - Labrador 1-1-0-1
- 7 - Retriever - NSDT 1-3-2-1
- 1 - Spaniel - English Springer 0-1-0-0
- 3 - Weimaraner 1-2-0-0
- 25 - Retriever - Golden 3-9-7-4 V2 Exh1

SPORTING GROUP LEVEL

Tentative Group Order:

(Immediately following breed judging in relevant group)

Terrier

Toy

Working

Herding

Hound

Non-Sporting

Sporting

BVIS/RBIS/BIS/BPIS - Dr. Terill Udenberg (167)

V8



WKKC - August 16th, 2025 (Saturday)

PM - Show #4

Key: 0-0-0-0

BP

B

Male-Female-Specials Male-Specials Female

Baby Puppy

Brace

RING 1

1:00 pm
Junior Handling
Judge: tba

1:45 pm

Judge: Ms. Margaret Jones (39)

- 1 - Biewer Terrier 0-0-0-1
- 7 - Cav King Charles Spaniel 1-4-1-1
- 7 - Chihuahua - Long Coat 3-2-0-2
- 7 - Chihuahua - Short Coat 0-1-1-5
- 2 - Chinese Crested 0-0-1-0 BP1
- 1 - Griffon - Brussels 0-1-0-0
- 4 - Havanaese 0-2-1-0 BP1
- 1 - Papillon 0-0-0-1
- 1 - Pekingese 0-0-1-0
- 4 - Pomeranian 1-1-1-1
- 1 - Pug 0-0-1-0
- 1 - Silky Terrier 0-0-0-1
- 2 - Yorkshire Terrier 1-0-1-0

TOY GROUP LEVEL

3:35 pm

Judge: Ms. Margaret Jones (21)

- 1 - Australian Shepherd 1-0-0-0
- 2 - Bearded Collie 0-0-0-2
- 1 - Belgian Shepherd 0-0-1-0
- 1 - Border Collie 0-0-1-0
- 2 - Bouvier des Flandres 1-0-0-1
- 6 - Collie - Rough 0-1-3-2 Exh1
- 1 - Collie - Smooth 0-0-0-1
- 1 - Iceland Sheepdog 1-0-0-0
- 5 - Shetland Sheepdog 0-1-3-1
- 1 - Finnish Lapphund 1-0-0-0

HERDING GROUP LEVEL

4:45 pm

Judge: Ms. Margaret Jones (14)

- 3 - Keeshond 2-0-1-0
- 2 - Bichon Frise 0-0-1-1
- 1 - Boston Terrier 0-0-0-0 BP1
- 2 - French Bulldog 0-2-0-0
- 1 - Shiba Inu 0-0-1-0
- 2 - Shih Tzu 1-0-0-1
- 3 - Poodle - Standard 1-1-1-0

NON-SPORTING GROUP LEVEL

RING 2

1:15 pm

Judge: Dr. Terill Udenberg (11)

- 1 - Am Staffordshire Terrier 0-0-0-1
- 1 - Bull Terrier - Miniature 0-0-0-1
- 2 - Bull Terrier 1-0-1-0
- 2 - Cairn Terrier 1-0-0-1
- 1 - Scottish Terrier 0-0-0-1
- 1 - Welsh Terrier 0-1-0-0
- 3 - West Highland White Terrier 0-0-1-2

TERRIER GROUP LEVEL

1:55 pm

Judge: Dr. Terill Udenberg (35)

- 15 - Bernese Mountain Dog 3-5-0-3 B2
- 1 - Boxer 0-0-0-1
- 3 - Doberman Pinscher 0-0-1-1 BP1
- 2 - Great Dane 0-0-0-1 BP1
- 6 - Mastiff 0-2-1-1 BP2
- 3 - Newfoundland 0-1-0-2
- 2 - Rottweiler 1-0-1-0
- 1 - Samoyed 0-1-0-0
- 1 - Schnauzer - Giant 0-0-0-1
- 1 - Siberian Husky 0-0-1-0

WORKING GROUP LEVEL

3:30 pm

Judge: Dr. Terill Udenberg (13)

- 1 - Basset Hound 0-0-1-0
- 1 - Whippet 0-0-1-0
- 1 - PBGV 0-0-1-0
- 2 - Afghan Hound 1-1-0-0
- 1 - Borzoi 0-0-1-0
- 1 - Norrbottenspets 1-0-0-0
- 3 - Otterhound 0-1-1-1
- 1 - Pharoah Hound 0-0-1-0
- 2 - Rhodesian Ridgeback 1-0-0-1

HOUND GROUP LEVEL

Judge: Dr. Terill Udenberg (42)

- 1 - Pointer 0-0-1-0
- 4 - Retriever - Labrador 1-1-0-1 BP1
- 7 - Retriever - NSDT 1-3-2-1
- 4 - Setter - Irish Red & White 0-1-0-1 B1
- 1 - Spaniel - English Springer 0-1-0-0
- 3 - Weimaraner 1-2-0-0
- 22 - Retriever - Golden 2-9-7-4

SPORTING GROUP LEVEL



& Parade
Following BIS

Tentative Group Order:

(Immediately following breed judging in relevant group)

Terrier

Working

Toy

Hound

Herding

Non-Sporting

Sporting

BBPIS/BBIS/RBIS/BIS/BPIS - Dick Lopachuk (161)

BP8 B3



sandik@classicshowservices.ca

WKKC - August 17th, 2025 (Sunday)

AM Show #5

Key: 0-0-0-0

V

Exh

Male-Female-Specials Male-Specials Female Veteran Exhibition Only ***Booster/Supported Entry

RING 1

8:00 am

Judge: Patrick Mudge (23)

1 - Australian Shepherd	1-0-0-0
2 - Bearded Collie	0-0-0-2
1 - Border Collie	0-0-1-0
2 - Bouvier des Flandres	1-0-0-1
7 - Collie - Rough	0-1-3-2 V1 Exh2
1 - Collie - Smooth	0-0-0-1
1 - Iceland Sheepdog	1-0-0-0
7 - Shetland Sheepdog	0-2-3-1 V1
1 - Finnish Lapphund	1-0-0-0

HERDING GROUP LEVEL

9:05 am

Judge: Patrick Mudge (41)

1 - Pointer	0-0-1-0
24 - Retriever - Golden ***	3-9-7-3 V2 Exh1
5 - Retriever - Labrador	1-2-1-1
7 - Retriever - NSDT	1-3-2-1
1 - Spaniel - English Springer	0-1-0-0
3 - Weimaraner	1-2-0-0

SPORTING GROUP LEVEL

10:45 am

Judge: Patrick Mudge (15)

1 - Basset Hound	0-0-1-0
3 - Whippet	0-1-2-0
1 - PBGV	0-0-1-0
2 - Afghan Hound	1-1-0-0
1 - Borzoi	1-0-0-0
1 - Norrbottenspets	1-0-0-0
3 - Otterhound	0-1-1-1
1 - Pharaoh Hound	0-0-1-0
2 - Rhodesian Ridgeback	1-0-0-1

HOUND GROUP LEVEL

Judge: Patrick Mudge (40)

1 - Biewer Terrier	0-0-0-1
9 - Cav King Charles Spaniel	2-4-1-1 V1
7 - Chihuahua - Long Coat	3-2-0-2
7 - Chihuahua - Short Coat	0-1-1-5
1 - Chinese Crested	0-0-1-0
1 - Griffon - Brussels	0-1-0-0
3 - Havanese	0-2-1-0
2 - Papillon	0-0-0-1 V1
1 - Pekingese	0-0-1-0
4 - Pomeranian	1-1-1-1
1 - Pug	0-0-1-0
1 - Silky Terrier	0-0-0-1
2 - Yorkshire Terrier	1-0-1-0

TOY GROUP LEVEL

RING 2

8:00 am

Judge: Patricia Taylor (30)

1 - Akita	0-0-1-0
11 - Bernese Mountain Dog ***	3-5-0-3
2 - Boxer	0-0-0-2
2 - Doberman Pinscher	0-0-1-1
1 - Great Dane	0-0-0-1
4 - Mastiff	0-2-1-1
3 - Newfoundland ***	0-1-0-1 V1
2 - Rottweiler	1-0-1-0
1 - Samoyed	0-1-0-0
1 - Schnauzer - Giant	0-0-0-1
2 - Siberian Husky	0-0-1-0 V1

WORKING GROUP LEVEL

9:30 am

Judge: Patricia Taylor (13)

1 - Am Staffordshire Terrier	0-0-0-1
2 - Bull Terrier - Miniature	0-0-1-1
1 - Irish Terrier	0-0-1-0
2 - Bull Terrier	1-0-1-0
2 - Cairn Terrier	1-0-0-1
1 - Scottish Terrier	0-0-1-0
1 - Welsh Terrier	0-1-0-0
3 - West Highland White Terrier	0-0-1-2

TERRIER GROUP LEVEL

10:10 am

Judge: Patricia Taylor (13)

3 - Keeshond	2-0-1-0
2 - Bichon Frise	0-0-1-1
2 - French Bulldog	0-2-0-0
1 - Shiba Inu	0-0-1-0
2 - Shih Tzu	1-0-0-1
3 - Poodles - Standard	1-1-1-0

NON-SPORTING GROUP LEVEL

Tentative Group Order:

(Immediately following breed judging in relevant group)

Herding

Working

Terrier

Sporting

Non-Sporting

Hound

Toy

BVIS/RBIS/BIS/BPIS - Patrick Mudge (167)

V8



WKKC - August 17th, 2025 (Sunday)

PM Show #6

Key: 0-0-0-0

BP

B

Exh

Male-Female-Specials Male-Specials Female Baby Puppy Brace Exhibition Only

RING 1

1:30 pm

Judge: Wendy Hamilton-Petkau (33)

15 - Bernese Mountain Dog	3-5-0-3	B2
1 - Boxer	0-0-0-1	
3 - Doberman Pinscher	0-0-1-1	BP1
2 - Great Dane	0-0-0-1	BP1
6 - Mastiff	0-2-1-1	BP2
3 - Newfoundland	0-1-0-2	
2 - Rottweiler	1-0-1-0	
1 - Schnauzer - Giant	0-0-0-1	

WORKING GROUP LEVEL

3:00 pm

Judge: Wendy Hamilton-Petkau (43)

1 - Biewer Terrier	0-0-0-1	
9 - Cav King Charles Spaniel	1-4-1-1	B1 Exh1

7 - Chihuahua - Long Coat	3-1-0-3	
7 - Chihuahua - Short Coat	0-1-1-5	
2 - Chinese Crested	0-0-1-0	BP1
1 - Griffon - Brussels	0-1-0-0	
3 - Havanese	0-1-1-0	BP1
1 - Pekingese	0-0-1-0	
4 - Pomeranian	1-1-1-1	
1 - Pug	0-0-1-0	
1 - Silky Terrier	0-0-0-1	
2 - Yorkshire Terrier	1-0-1-0	
4 - Papillon	1-0-1-1	BP1

TOY GROUP LEVEL

RING 2

11:00 am

Judge: Patricia Taylor (20)

1 - Australian Shepherd	1-0-0-0	
2 - Bearded Collie	0-0-0-2	
1 - Border Collie	0-0-1-0	
2 - Bouvier des Flandres	1-0-0-1	
6 - Collie - Rough	0-1-3-2	Exh1
1 - Collie - Smooth	0-0-0-1	
1 - Iceland Sheepdog	1-0-0-0	
5 - Shetland Sheepdog	0-1-3-1	
1 - Finnish Lapphund	1-0-0-0	

HERDING GROUP LEVEL

12:00 noon

Junior Handling

Judge: tba

1:30 pm

Judge: Patricia Taylor (14)

1 - Basset Hound	0-0-1-0	
2 - Whippet	0-1-1-0	
1 - PBGV	0-0-1-0	
2 - Afghan Hound	1-1-0-0	
1 - Borzoi	0-0-1-0	
1 - Norrbottenspets	1-0-0-0	
3 - Otterhound	0-1-1-1	
1 - Pharaoh Hound	0-0-1-0	
2 - Rhodesian Ridgeback	1-0-0-1	

HOUND GROUP LEVEL

Judge: Patricia Taylor (40)

1 - Pointer	0-0-1-0	
21 - Retriever - Golden	2-9-7-3	
4 - Retriever - Labrador	1-2-0-1	
6 - Retriever - NSDT	1-3-1-1	
4 - Setter - Irish Red & White	0-1-0-1	B1
1 - Spaniel - English Springer	0-1-0-0	
3 - Weimaraner	1-2-0-0	

SPORTING GROUP LEVEL

4:00 pm

Judge: Patrick Mudge (11)

1 - Am Staffordshire Terrier	0-0-0-1	
1 - Bull Terrier - Miniature	0-0-0-1	
2 - Bull Terrier	1-0-1-0	
2 - Cairn Terrier	1-0-0-1	
1 - Scottish Terrier	0-0-0-1	
1 - Welsh Terrier	0-1-0-0	
3 - West Highland White Terrier	0-0-1-2	

TERRIER GROUP LEVEL

Judge: Patrick Mudge (14)

3 - Keeshond	2-0-1-0	
1 - Boston Terrier	0-0-0-0	BP1
2 - French Bulldog	0-2-0-0	
3 - Poodle - Standard	1-1-1-0	
2 - Shih Tzu	1-0-0-1	
1 - Shiba Inu	0-0-1-0	
2 - Bichon Frise	0-0-1-1	

NON-SPORTING GROUP LEVEL



Perogy Pawty

\$15/ticket
6:00 pm

Tentative Group Order:

(Immediately following breed judging in relevant group)

Herding

Hound

Working

Sporting

Terrier

Toy

Non-Sporting

BBPIS/BBIS/RBIS/BIS/BPIS - Patricia Taylor (159)

BP8 B4



Classic SHOW SERVICES

sandik@classicshowservices.ca

WKKC - August 18th, 2025 (Monday)

Key: 0-0-0-0

Male-Female-Specials Male-Specials Female

RING 1

8:00 am



Chihuahua Club of BC

Judge: Gary Stiles (27)

Long-Coat Chihuahua

3-3-1-4

Short-Coat Chihuahua

0-2-2-5 BP1 A1 B2 BB1 Ex1

9:15 am

Judge: Gary Stiles (25)

1 - Biewer Terrier	0-0-0-1
2 - Cavalier King Charles Spaniel	0-1-0-1
1 - Chinese Crested	0-0-1-0
1 - Griffon - Brussels	0-1-0-0
4 - Havanese	0-3-1-0
5 - Papillon	1-0-2-2
1 - Pekingese	0-0-1-0
6 - Pomeranian	1-3-1-1
1 - Pug	0-0-1-0
1 - Silky Terrier	0-0-0-1
2 - Yorkshire Terrier	1-0-1-0

TOY GROUP LEVEL

10:30 am

Judge: Wendy Hamilton-Petkau (17)

1 - Pointer	0-0-1-0
4 - Retriever - Labrador	0-2-1-1
8 - Retriever - NSDT	1-3-2-2
1 - Setter - English	0-0-1-0
3 - Weimaraner	1-2-0-0

SPORTING GROUP LEVEL

11:20 am

Judge: Wendy Hamilton-Petkau (15)

1 - Am Staffordshire Terrier	0-0-0-1
2 - Bull Terrier - Miniature	0-0-1-1
1 - Irish Terrier	0-0-1-0
2 - Bull Terrier	1-0-1-0
2 - Cairn Terrier	1-0-0-1
2 - Rat Terrier	2-0-0-0
1 - Scottish Terrier	0-0-1-0
1 - Welsh Terrier	0-1-0-0
3 - West Highland White Terrier	0-0-1-2

TERRIER GROUP LEVEL

Lunch

1:00 pm

Judge: Wendy Hamilton-Petkau (23)

1 - Australian Shepherd	1-0-0-0
2 - Bearded Collie	0-0-0-2
1 - Belgian Shepherd	0-0-1-0
1 - Border Collie	0-0-1-0
2 - Bouvier des Flandres	1-0-0-1
6 - Collie - Rough	0-1-3-2 Exh1
2 - Collie - Smooth	0-0-0-2
1 - Iceland Sheepdog	1-0-0-0
6 - Shetland Sheepdog	0-2-3-1
1 - Finnish Lapphund	1-0-0-0

HERDING GROUP LEVEL

RING 2

8:00 am



Judge: Wendy Hamilton-Petkau (35)

Golden Retriever Club of BC

3-10-8-8 V2 BP1 B1 GD1

9:30 am

Raymond Yurick (16)

9 - Chihuahua - Long Coat	3-3-0-3
7 - Chihuahua - Short Coat	0-1-1-5

10:00 am

Raymond Yurick (25)

25 - Retriever - Golden	3-10-7-5 Exh1
-------------------------	---------------

11:00 am

Judge: Raymond Yurick (29)

1 - Akita	0-0-1-0
11 - Bernese Mountain Dog	3-5-0-3
2 - Boxer	0-0-0-2
3 - Doberman Pinscher	0-1-1-1
1 - Great Dane	0-0-0-1
4 - Mastiff	0-2-1-1
2 - Newfoundland	0-1-0-1
2 - Rottweiler	1-0-1-0
1 - Samoyed	0-1-0-0
1 - Schnauzer - Giant	0-0-0-1
1 - Siberian Husky	0-0-1-0

WORKING GROUP LEVEL

Lunch

1:00 pm

Judge: Raymond Yurick (12)

1 - PBGV	0-0-1-0
1 - Borzoi	0-0-1-0
1 - Norrbottenspets	1-0-0-0
3 - Otterhound	0-1-1-1
1 - Pharaoh Hound	0-0-1-0
2 - Rhodesian Ridgeback	1-0-0-1
3 - Whippet	0-1-2-0

HOUND GROUP LEVEL

Judge: Raymond Yurick (13)

3 - Keeshond	2-0-1-0
1 - Bichon Frise	0-0-1-0
2 - French Bulldog	0-2-0-0
1 - Shiba Inu	0-0-1-0
2 - Shih Tzu	1-0-0-1
1 - Dalmatian	0-1-0-0
3 - Poodle - Standard	1-1-1-0

NON-SPORTING GROUP LEVEL



70's Theme

Tentative Group Order:

(immediately following breed judging in relevant group)

Toy
Sporting
Terrier
Working
Hound
Herding
Non-Sporting

RBIS/BIS/BPIS - Raymond Yurick (175)



sandik@classicshowservices.ca

COME BY AND SAY "HI"
SHOP OUR BOOTHS...ON SITE ALL WEEKEND
INCLUDING:

Melissa Clarkson - Laser Engraved Pet Memorial etc
Sharon and Friend - bags and more
Jackie Mainzer - misc dog stuff
Nora and Rhonda - Crate pad etc
Kimberly - Customizable products
Donna - Show clothing
Kelly Rapley - 3D printed items



Carly D'Aoust
Continental Pet Company
250-702-7578
Find us on Instagram & Facebook!
